

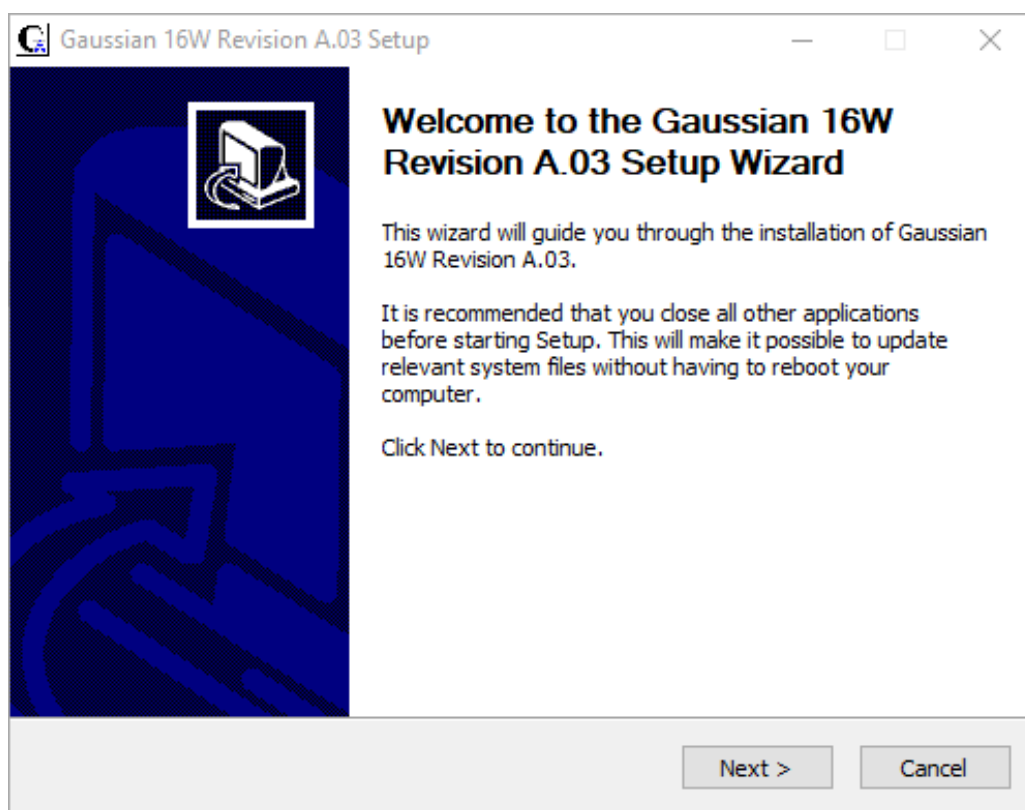
# Gaussian 16 & GaussView 06 Installation Guide

(For Windows)

## Gaussian 16 Installation

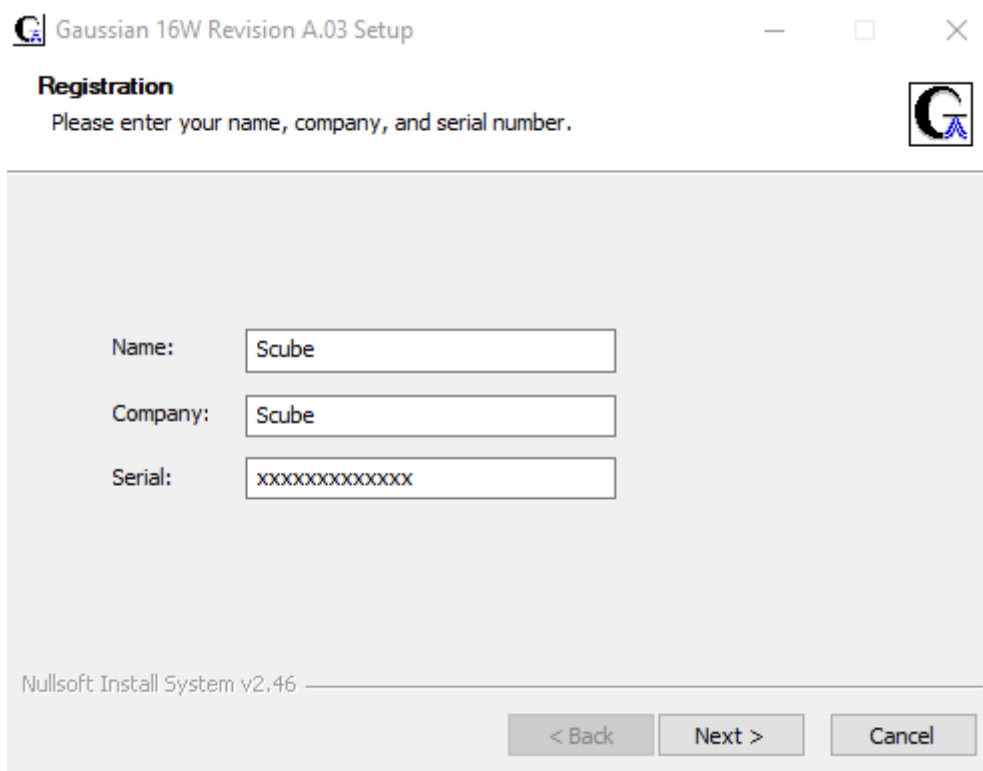
**Step1:** Insert the Gaussian 16 CD in your computer. Open the Gaussian folder. Run the Setup as administrator.

Setup the Gaussian 16W Revision A.03 or later Wizard.

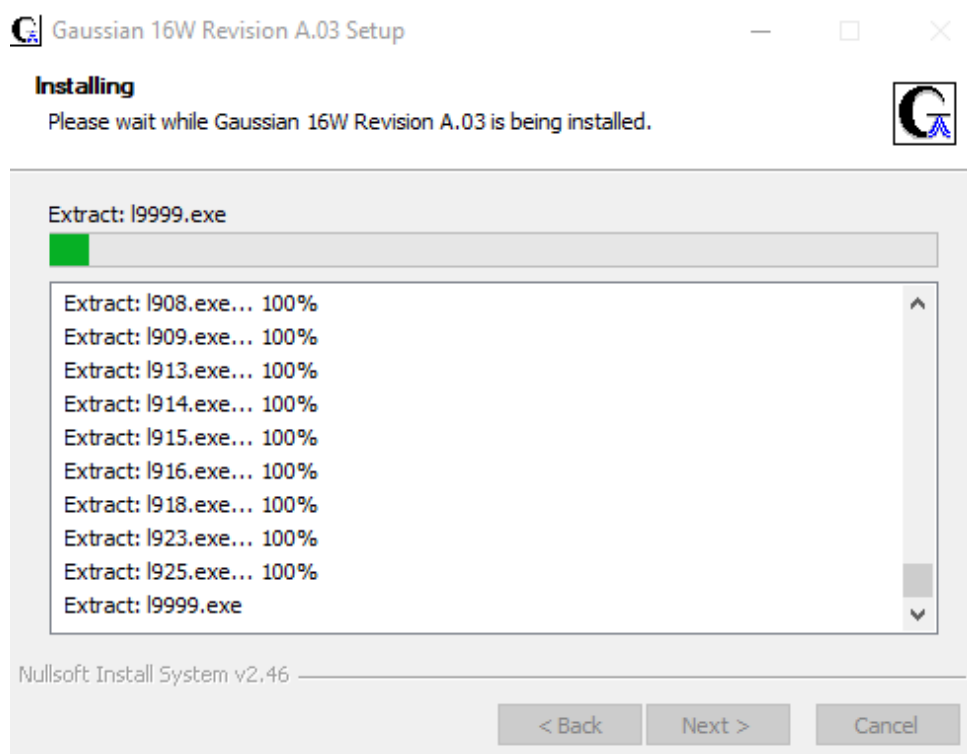




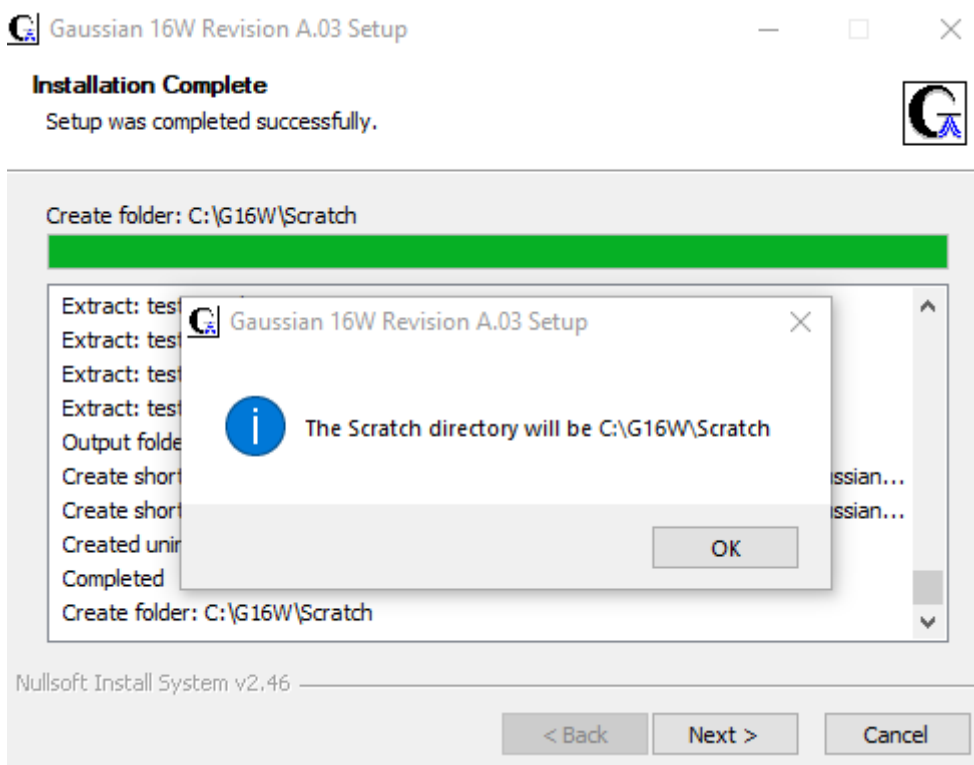
**Step 2: Enter your name, company or institution details and serial number.**



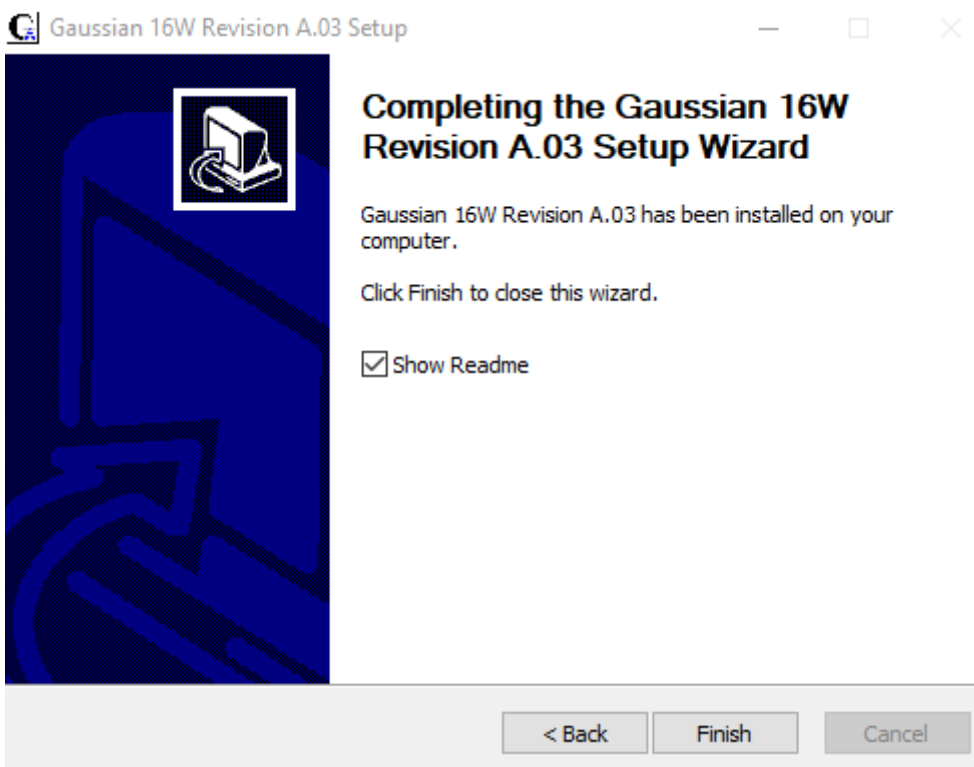
**Step 3: Once serial number is validated, follow on screen instructions and tick all on-screen options.**



**Step 4: Choose the Scratch Directory. Otherwise select default**

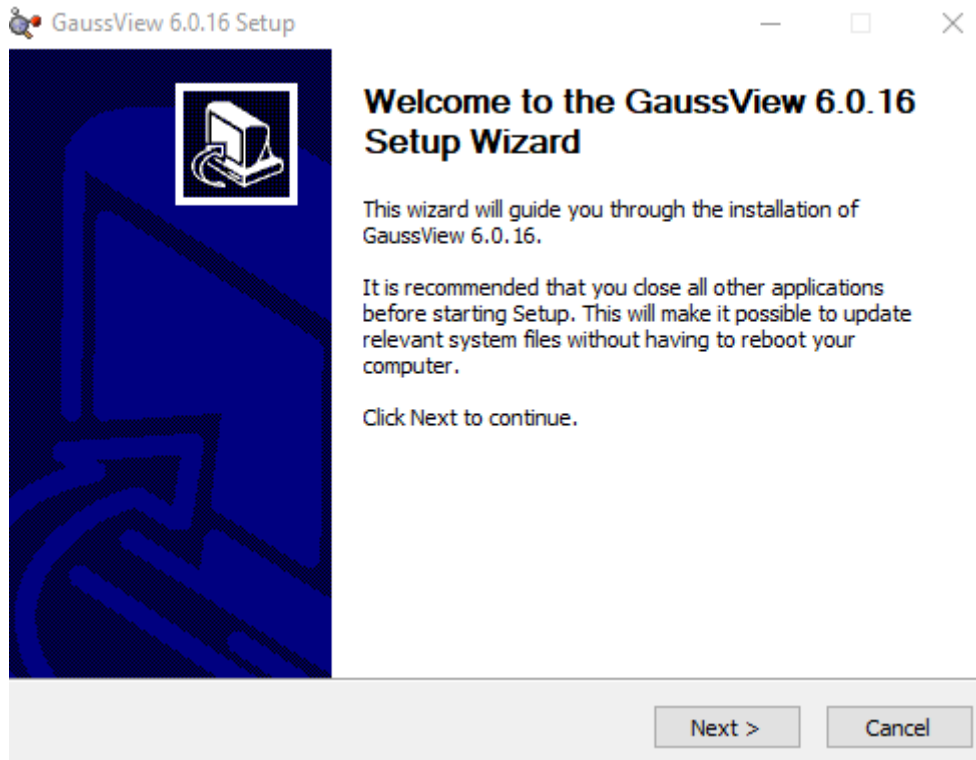


**Step 5: Gaussian 16W Revision A.03 is successfully installed.**



## GaussView 06 Installation

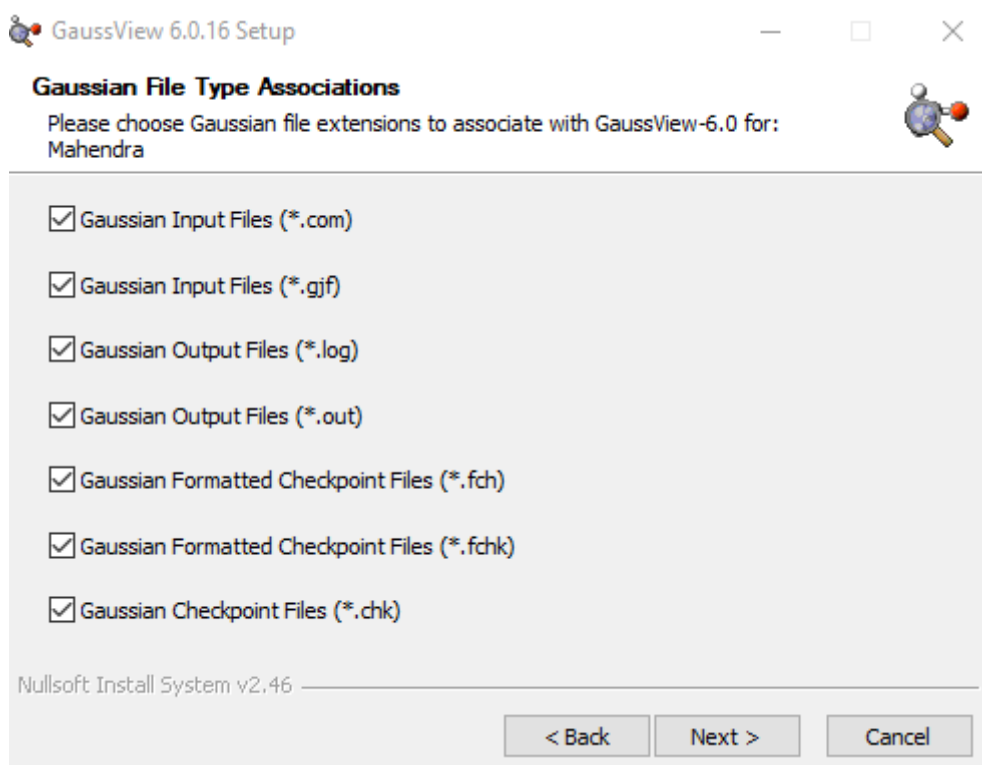
**Step 1:** Insert the GaussView 06 CD in your computer. Open the GV folder. Run the setup as administrator.



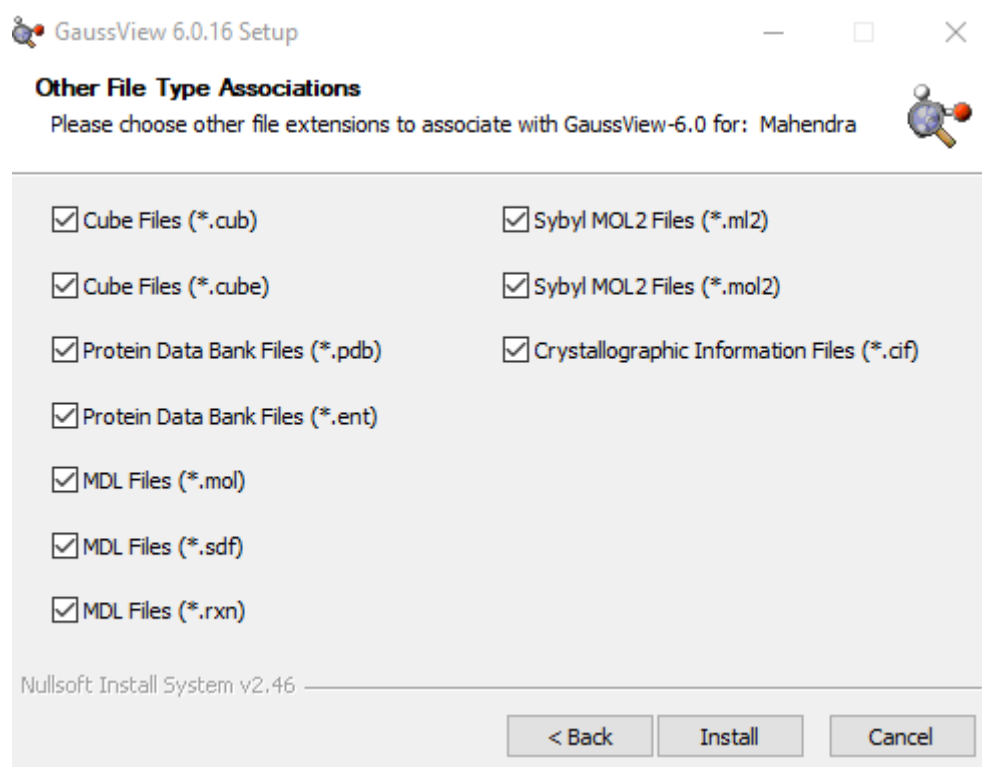
**Step 2:** Enter your name, company or institution details and serial number.

**Step 3:** Once serial number is validated, follow on screen instructions and tick all on-screen options.

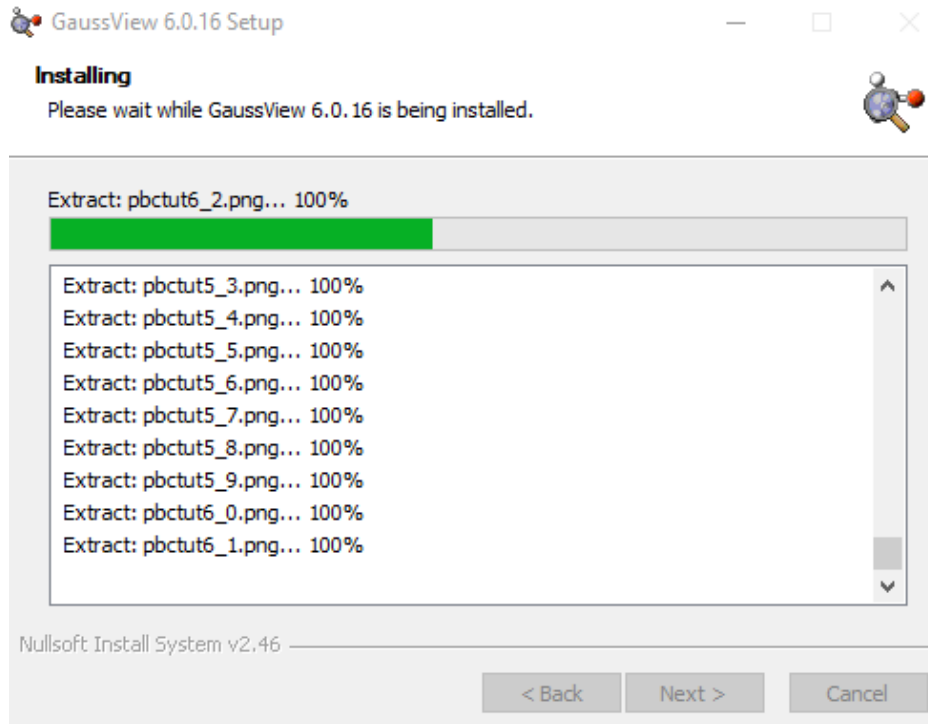
## Step 4: Select all Gaussian file type associations



## Step 5: Further, select other file type associations and click “Install”.



## Step 6: Installing.



## Step 7: GaussView 6.0.16 is successfully installed.

